

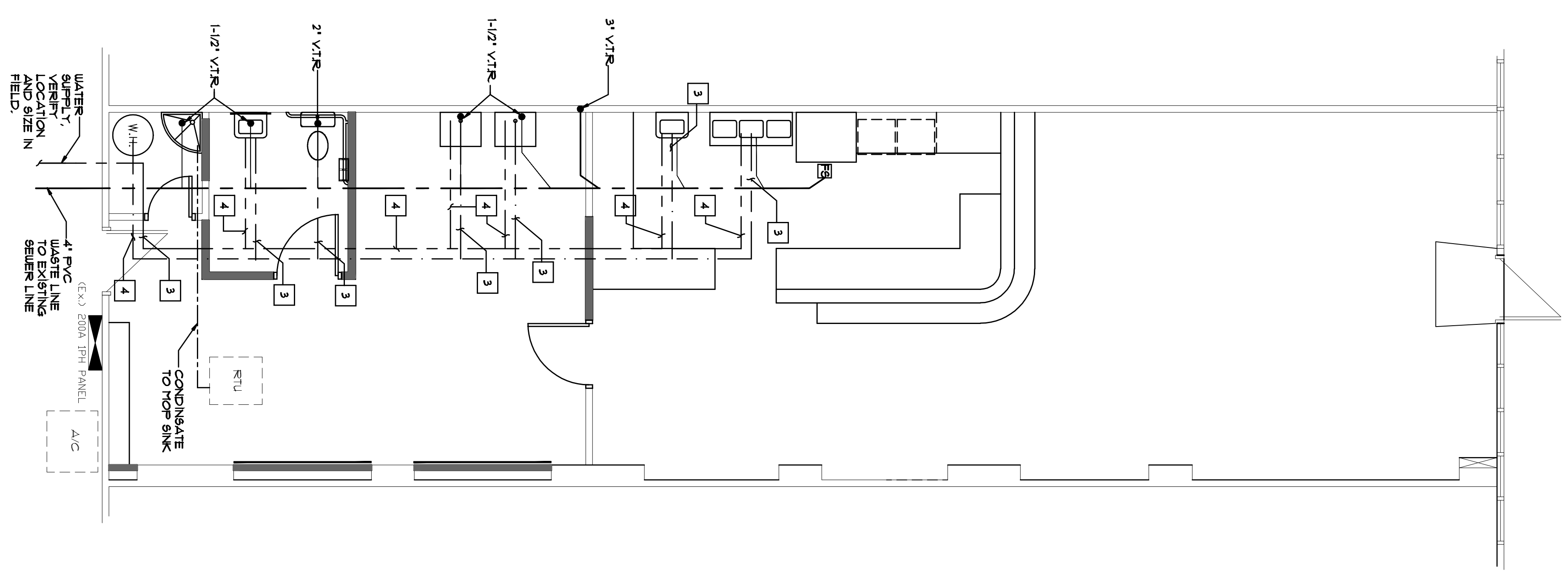
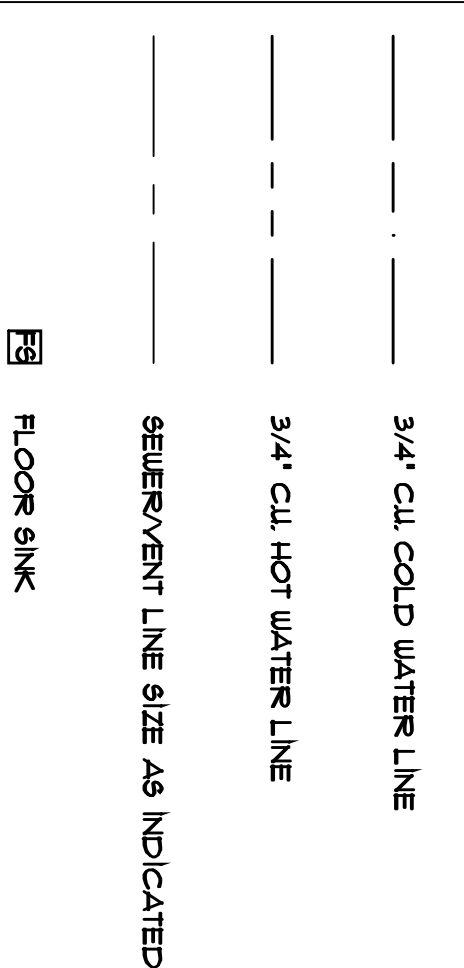
### PLUMBING KEYNOTES

1. 3/4" CUT FLOOR AS REQUIRED TO INSTALL NEW DRAIN LINES.
2. LOCATION OF WATER HEATER W/ EXPANSION TANK.
3. 3/4" COPPER COLD WATER SUPPLY LINE
4. 3/4" COPPER HOT WATER SUPPLY LINE

### GENERAL NOTES

- VERIFY LOCATION OF ALL UNDERGROUND UTILITIES PRIOR TO DETECTION OF SLAB OR SAW CUTTING.
- ALL PLUMBING SHALL CONFORM TO 2009 IPC, AND CUT TO CASA GRANDE ADOPTED AMENDMENTS.
- SEE SHEET AS FOR PLUMBING ISOMETRIC DIAGRAM AND NOTES.

### SYMBOLS LEGEND



1 PLUMBING PLAN  
1/4" = 1'-0"

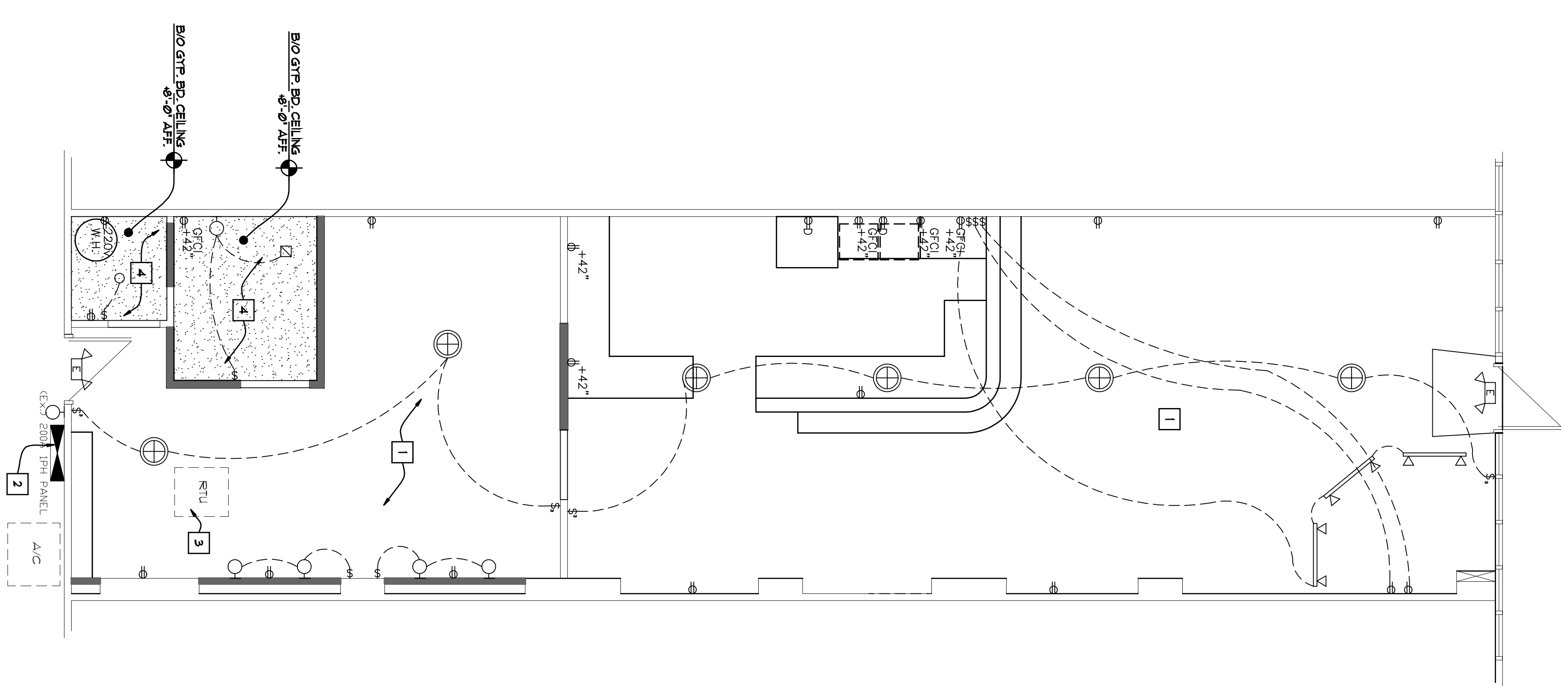
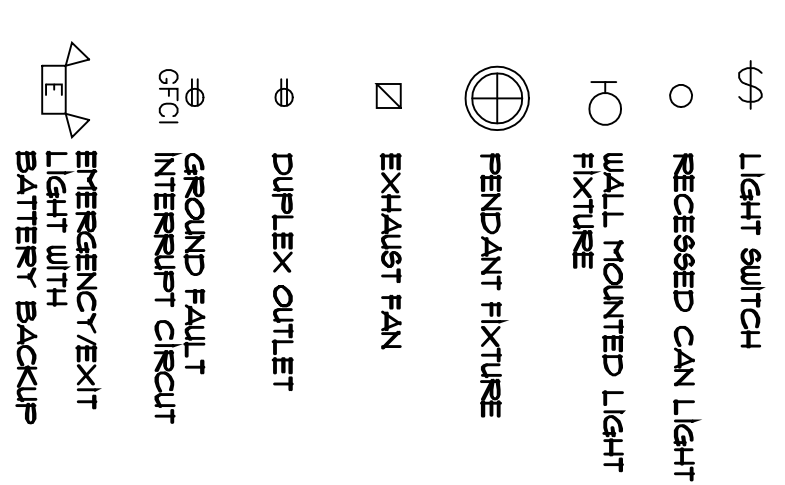
### PLAN KEYNOTES

1. REMOVE ALL ABANDONED CONDUIT, PATCH ALL EXISTING SURFACE FINISHES AS REQUIRED TO MATCH EXISTING ADJACENT SURFACES.
2. LOCATION OF EXISTING 2004 120/240V SINGLE PHASE SERVICE ENTRANCE / METER.
3. LOCATION OF EXISTING 120V 40A PROVIDE DUCTING, SUPPLY DIFFUSERS AND R/A GRILLE AS REQUIRED.
4. 8'-0" AFF. PAINTED 5/8" GYP. BD. CEILING ON 2x4 WOOD STUDS AT 6" O.C.

### GENERAL NOTES

- EMERGENCY POWER SHALL BE PROVIDED FOR EXIT SIGNS IN ACCORDANCE WITH I.B.C. 2107.2.3 & I.B.C. 1019.3
- EMERGENCY LIGHTING SHALL BE ILLUMINATED AT ALL TIMES IN ACCORDANCE WITH I.B.C. 1006.1
- ALL WIRING SHALL BE IN CONDUIT AFFIXED TO THE WALLS AND CEILING AS REQUIRED.
- SEAL ALL PENETRATIONS THROUGH BATED CONSTRUCTION IN ACCORDANCE WITH I.B.C. 1103.1
- ALL CIRCUITING TO BE PROVIDED BY OTHERS.
- CONTRACTOR SHALL VERIFY ALL ELECTRICAL LOADS WITH THE OWNER AND COORDINATE ALL WORK WITH THE EXISTING 2004 SERVICE ENTRANCE PANEL.
- CONTRACTOR SHALL VERIFY EXISTING TONNAGE AND VOLTAGE AND COMPENSATE ALL COOLING/HEATING REQUIREMENTS WITH OWNER

### SYMBOLS LEGEND



1 ELECTRICAL LIGHTING AND POWER PLAN  
1/4" = 1'-0"